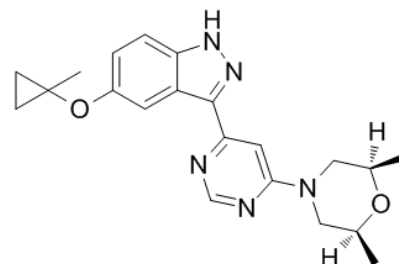


Product Name : MLi-2
Cat. No. : PC-42142
CAS No. : 1627091-47-7
Molecular Formula : C₂₁H₂₅N₅O₂
Molecular Weight : 379.4555
Target : LRRK2
Solubility : DMSO: ≥ 26 mg/mL



Biological Activity

A potent, selective, orally available and brain-penetrant LRRK2 inhibitor with kinase IC₅₀ of 0.76 nM, cellular IC₅₀ of 1.4 nM (dephosphorylation of LRRK2 pSer935 LRRK2); displays >295-fold selectivity for over 300 kinases in addition to a diverse panel of receptors and ion channels; significantly reduces the ratio of phosphorylated Ser935 LRRK2 (pS935) to total LRRK2 in the mouse cortex, consistent with enlarged type II pneumocytes.

References

- Scott JD, et al. J Med Chem. 2017 Apr 13;60(7):2983-2992.
 Fell MJ, et al. J Pharmacol Exp Ther. 2015 Dec;355(3):397-409.
 Volpicelli-Daley LA, et al. J Neurosci. 2016 Jul 13;36(28):7415-27.

Caution: Product has not been fully validated for medical applications. Lab Use Only!

E-mail: tech@probechem.com